

Função: Detalhamento Fundação  
Concreto C25, em geral  
Escala: 1:40

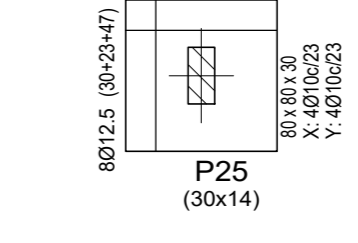
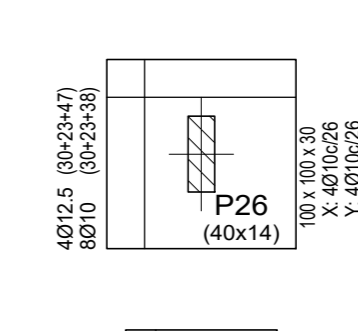
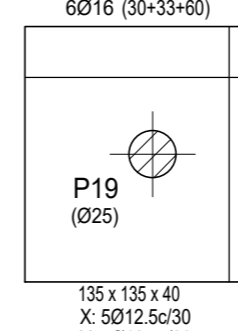
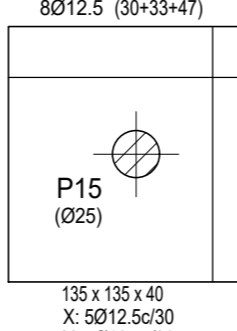
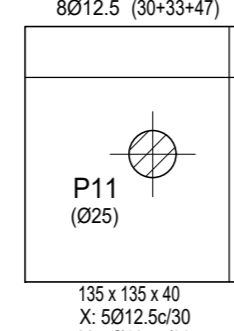
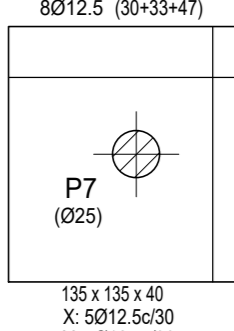
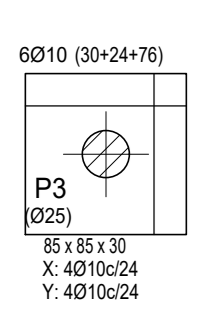
Arcoverde  
300  
35

Relações	Armadura Direta	Armadura Fuso X
P1, P4, P5, P8, P16, P20	Ø10 (20x24-76)	2Ø10 (20x24-76)
P2, P3	Ø10 (20x24-76)	2Ø10 (20x24-76)
P4, P5, P10, P14	Ø10 (20x24-76)	2Ø10 (20x24-76)
P5, P10, P14, P16	Ø10 (20x24-76)	2Ø10 (20x24-76)
P6, P7, P17	Ø10 (20x24-76)	2Ø10 (20x24-76)
P8, P12, P16, P18, P20	Ø10 (20x24-76)	2Ø10 (20x24-76)
P9, P13	Ø10 (20x24-76)	2Ø10 (20x24-76)
P11, P15	Ø10 (20x24-76)	2Ø10 (20x24-76)
P19	Ø10 (20x24-76)	2Ø10 (20x24-76)
P21	Ø10 (20x24-76)	2Ø10 (20x24-76)
P22	Ø10 (20x24-76)	2Ø10 (20x24-76)
P23	Ø10 (20x24-76)	2Ø10 (20x24-76)
P24, P25	Ø10 (20x24-76)	2Ø10 (20x24-76)
P26	Ø10 (20x24-76)	2Ø10 (20x24-76)
P27	Ø10 (20x24-76)	2Ø10 (20x24-76)

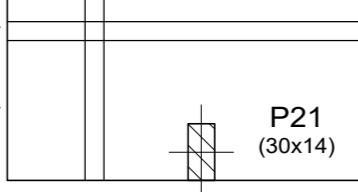
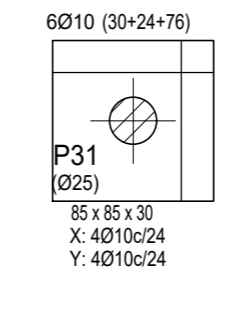
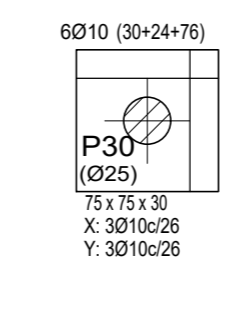
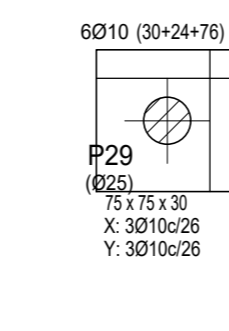
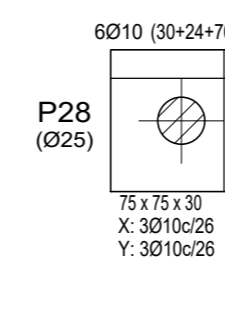
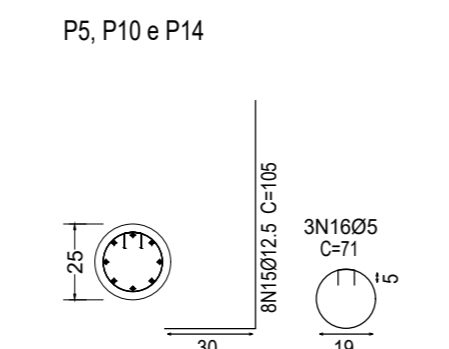
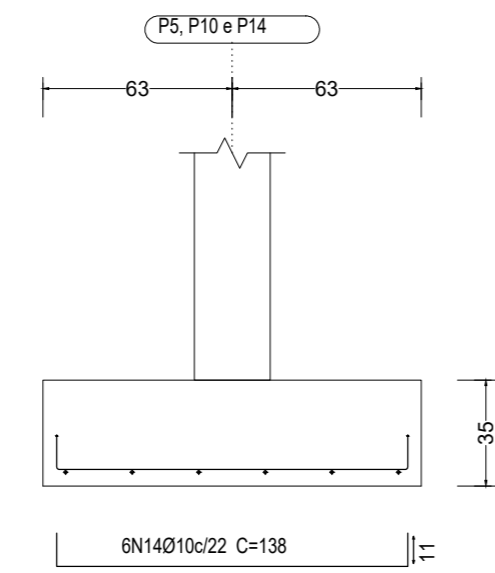
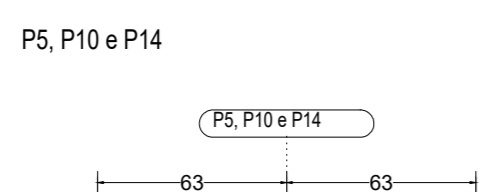
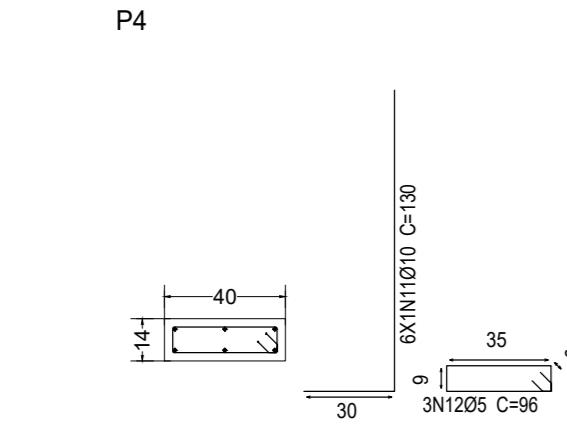
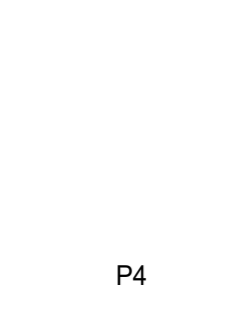
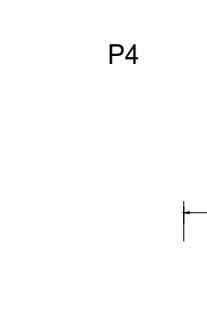
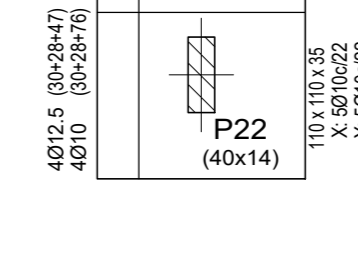
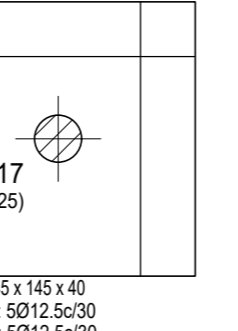
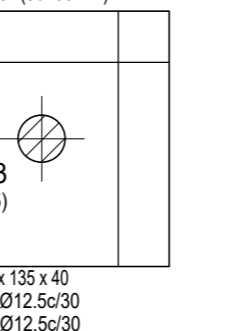
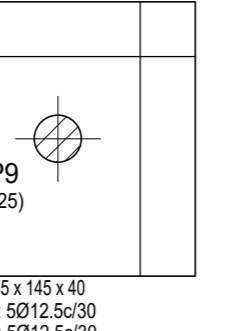
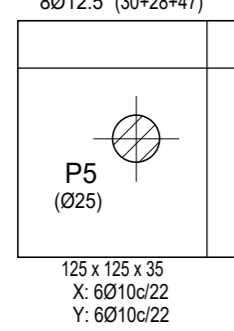
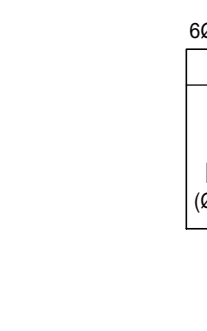
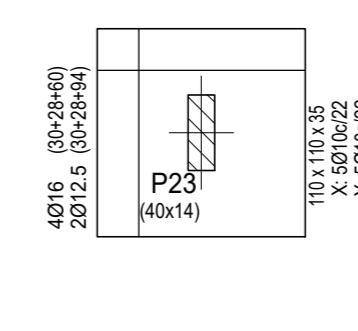
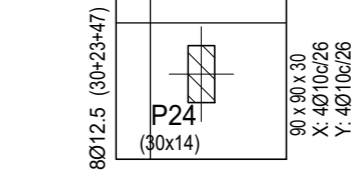
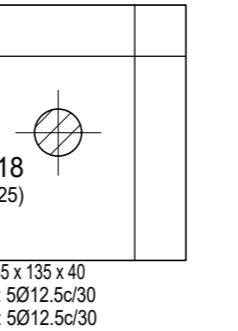
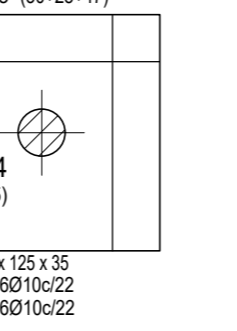
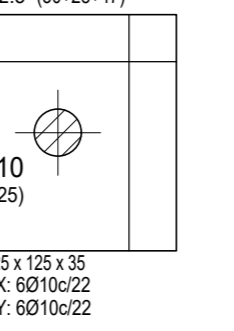
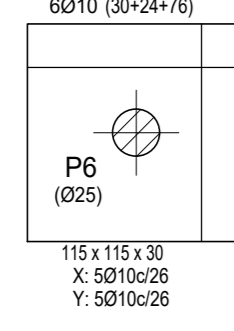
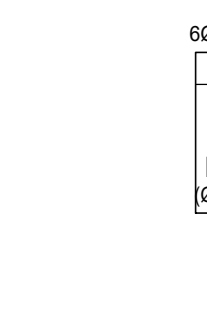
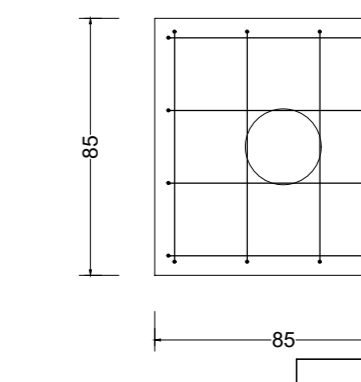
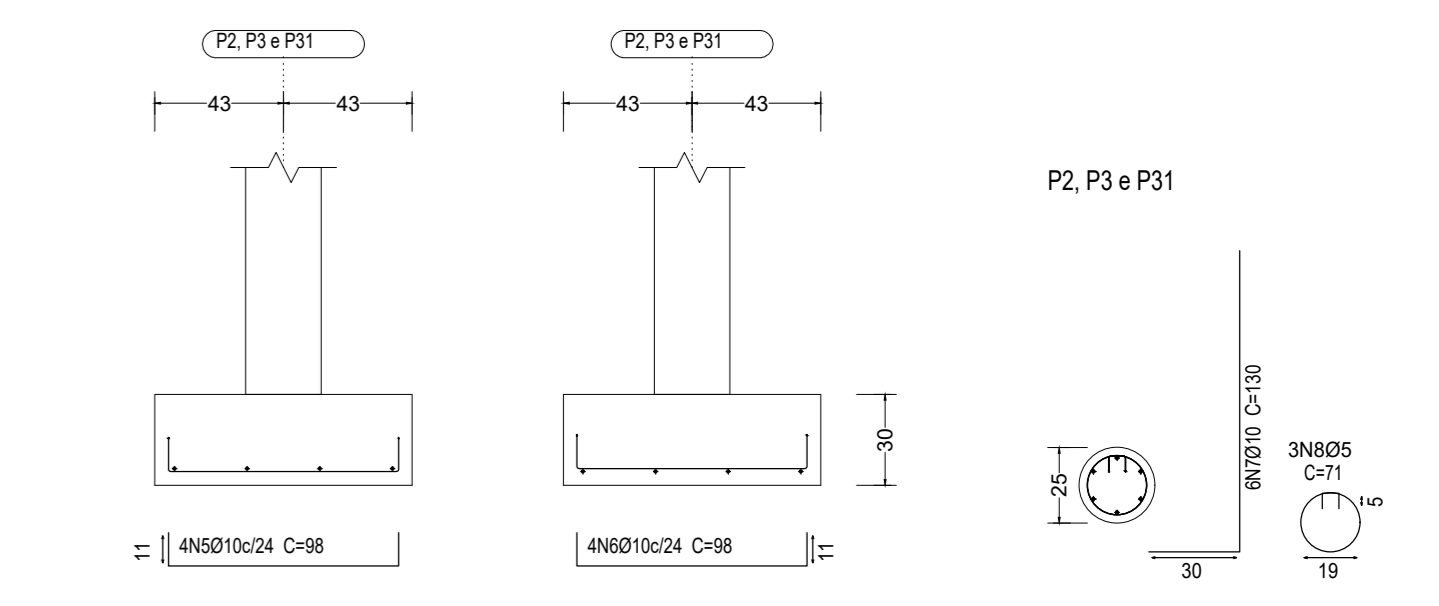
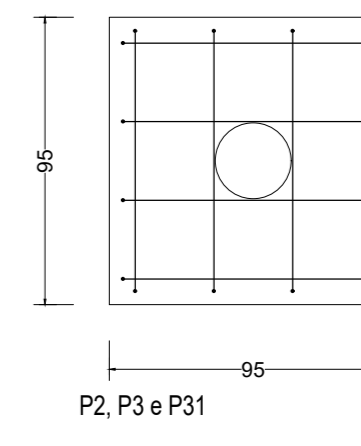
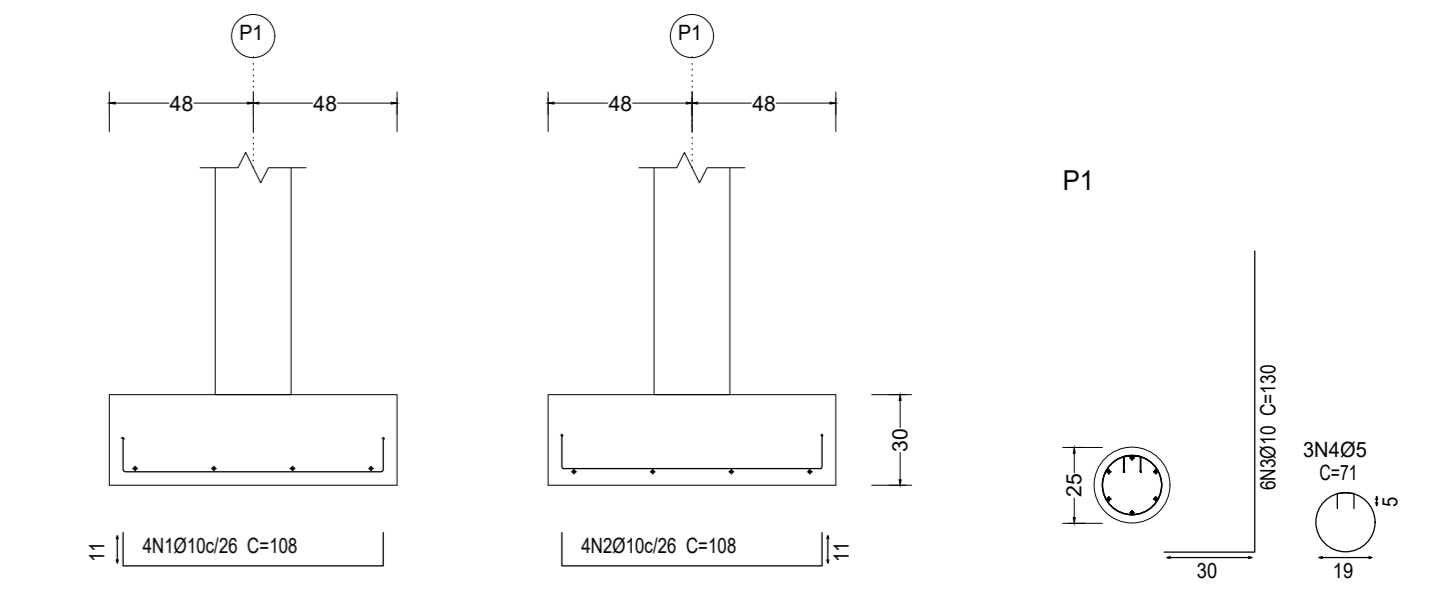
Elemento	Pos.	Diam.	Q.	Dob.	Reta	Dob.	Comp.	Total	CA-50	CA-60
		(cm)	(cm)	(cm)	(cm)	(cm)	(cm)	(cm)	(kg)	(kg)
P1	1	Ø10	4	11	86	11	108	432	2,7	
	2	Ø10	4	11	86	11	108	432	2,7	
	3	Ø10	6	30	100	100	130	780	4,8	
	4	Ø5	3	71	71	71	213			0,3
Total								102		0,3
P2-P3-P31	5	Ø10	4	11	76	11	86	362	2,4	
	6	Ø10	4	11	86	11	108	432	2,7	
	7	Ø10	6	30	100	100	130	780	4,8	
	8	Ø5	3	71	71	71	213			0,3
Total								96		0,9
P4	9	Ø10	4	11	81	11	103	412	2,5	
	10	Ø10	4	11	81	11	103	412	2,5	
	11	Ø10	6	30	100	100	130	780	4,8	
	12	Ø5	3	96	96	96	288			0,5
Total								98		0,5
P5-P10-P14	13	Ø10	6	11	116	11	138	828	5,1	
	14	Ø10	6	11	116	11	138	828	5,1	
	15	Ø12,5	8	30	75	105	840	8,1		
	16	Ø5	3	71	71	71	213			0,3
Total								183		0,9
Total								930		2,8
Total								1010		0,0
Total								8712,8		34,3
Total								103,7		2,8

Resumo Aço Fundação	Comp. total (m)	Peso (kg)	Total
CA-50 Ø10	364,6	225	
Ø12,5	235,1	226	
Ø16	54,7	86	537
CA-60 Ø5	78,0	12	12
<b>Total</b>		<b>549</b>	

QUADRO DE ELEMENTOS DE FUNDAÇÃO				
Relações	Diâmetro (cm)	Altura (cm)	Armadura H X	Armadura H Y
P1	Ø10	30	4Ø10/26	4Ø10/26
P2, P3, P31	Ø10	30	4Ø10/26	4Ø10/26
P4	Ø10	30	4Ø10/26	4Ø10/26
P5, P10, P14	Ø10	30	4Ø10/26	4Ø10/26
P6	Ø10	30	4Ø10/26	4Ø10/26
P7, P17	Ø10	30	4Ø10/26	4Ø10/26
P8, P12, P16, P18, P20	Ø10	30	4Ø10/26	4Ø10/26
P9, P13	Ø10	30	4Ø10/26	4Ø10/26
P11, P15	Ø10	30	4Ø10/26	4Ø10/26
P19	Ø10	30	4Ø10/26	4Ø10/26
P21	Ø10	30	4Ø10/26	4Ø10/26
P22	Ø10	30	4Ø10/26	4Ø10/26
P23	Ø10	30	4Ø10/26	4Ø10/26
P24, P25	Ø10	30	4Ø10/26	4Ø10/26
P26	Ø10	30	4Ø10/26	4Ø10/26
P27	Ø10	30	4Ø10/26	4Ø10/26



P1



# FUNDAÇÕES

ARCOVERDE - PE

Endereço: Avenida Odivaldo Cruz, BR 232, nº 1328, Bairro São Miguel  
 Proprietário: Seção Judiciária do Pernambuco  
 Autor do Projeto: Eng.º Civil Lúcio Cabral Branco - CREA Nº 1.768-D/P  
 Resp. Técnico:

Proprietário: \_\_\_\_\_  
 Autor do Projeto: \_\_\_\_\_ CREA Nº 1.768-D/P  
 A.T. CREA Nº: \_\_\_\_\_

CREA

## FUNDAÇÕES EM SAPATAS

PRIMEIRA ESTACIONAMENTO COBERTO FPO  
**01/02** FUNDAÇÕES: DIMENSÕES E ARMADURAS **ESTR.**  
 Data: 06/03/2023 Desenhista: Lúcio Escala: 1:40